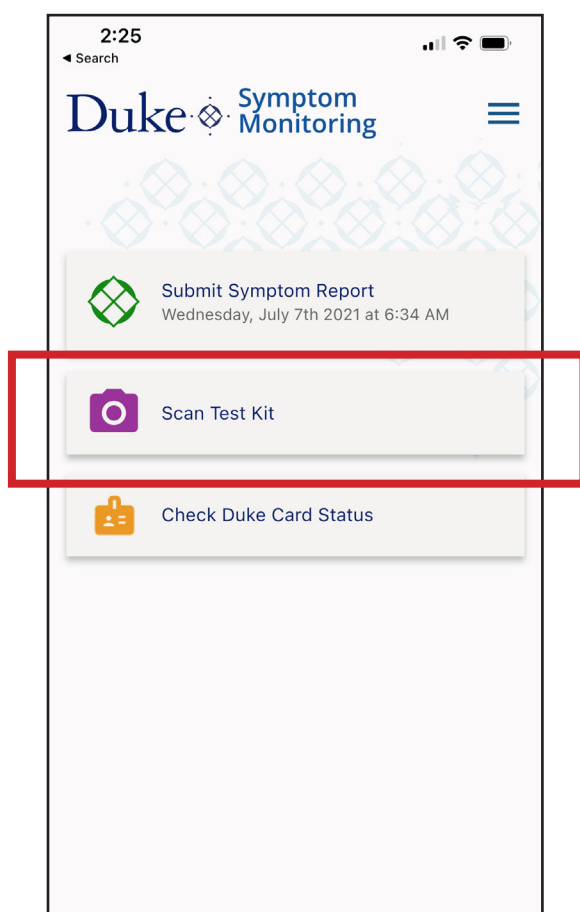


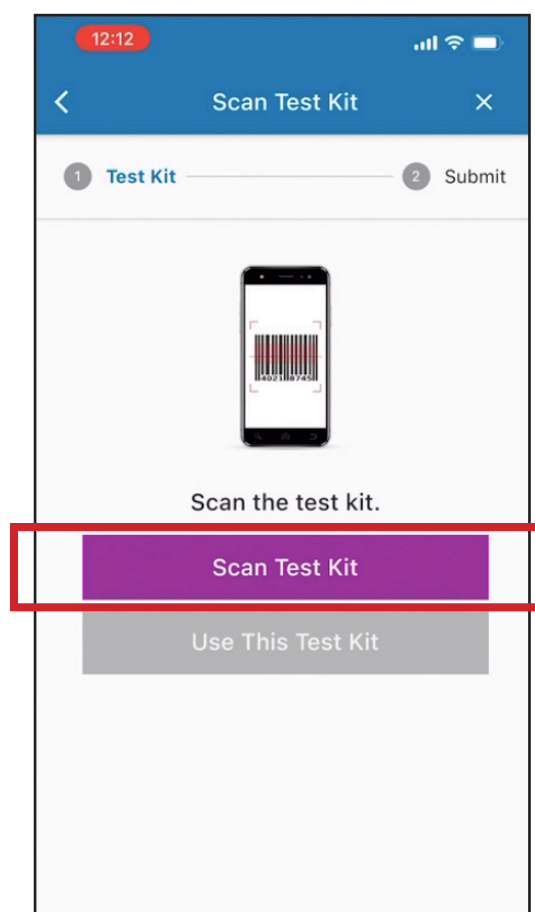
## Register for Testing

- 1** Pull one test tube from rack & scan with phone using process described below:



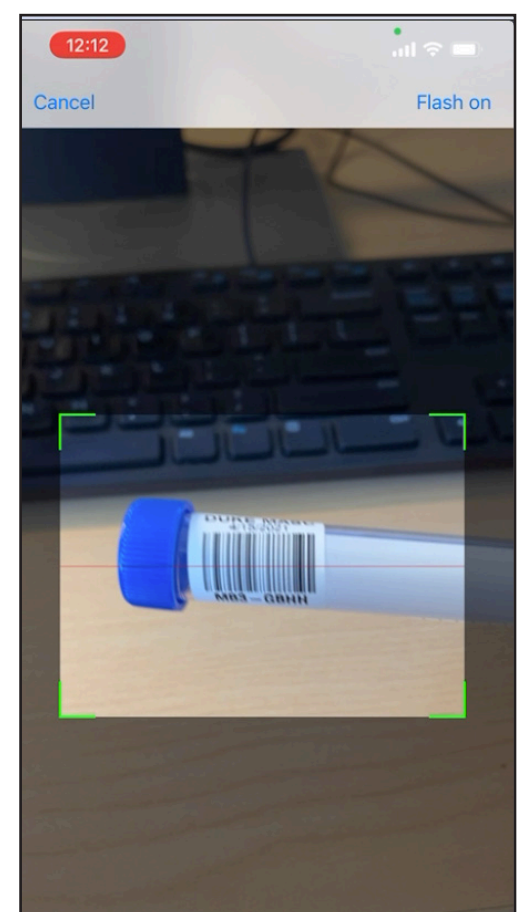
**2**

Open SymMon app & select **"Scan Test Kit"**



**3**

Select **"Scan Test Kit"** button



**4**

Hold phone camera over barcode, then press **"Submit"**

**5**

Green check mark indicates test kit has been submitted.

**6**

Complete self-administered swabbing process